

Kubota®



KUBOTA COMPACT TRACK LOADER

SVL

SVL75-2 / SVL90-2

The outstanding power and exceptional comfort of Kubota's new Compact Track Loaders take high performance and productivity to a new level.



Need more productivity? Put the all-new Kubota Compact Track Loader to work for you.

Kubota, a trusted and world-leading manufacturer of construction equipment, is proud to introduce the all-new SVL75-2/SVL90-2 Compact Track Loaders. These new compact track loaders deliver best-in-class bucket breakout force and lifting capacity, outstanding stability, a wide and comfortable operator area, and much more. When it comes to high performance, reliability and comfort, the road leads to Kubota.

OUTSTANDING PERFORMANCE

EXCEPTIONAL COMFORT

**EASY MAINTENANCE AND
IMPRESSIVE DURABILITY**

SVL75-2

Engine gross horsepower : 74.3 HP (55.4 kW)

Rated operating capacity (35% of tipping load) : 2300 lbs (1043 kg)

Lifting capacity : 4881 lbs (2214 kg)

Bucket breakout force : 6204 lbs (2814 kg)

Operating weight (Including operator weight 175 lbs) : 9039 lbs (4100 kg)



COMPACT TRACK LOADER SVL75-2/SVL90-2



SVL90-2

Engine gross horsepower : 92.0 HP (68.6 kW)

Rated operating capacity (35% of tipping load) : 3010 lbs (1365 kg)

Lifting capacity : 5869 lbs (2662 kg)

Bucket breakout force : 7961 lbs (3611 kg)

Operating weight (Including operator weight 175 lbs) : 11023 lbs (5000 kg)

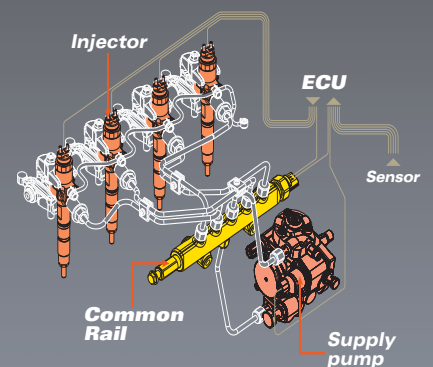


OUTSTANDING PERFORMANCE

Kubota Engine

Common Rail System and Diesel Particulate Filter (DPF) Muffler

The Common Rail System (CRS) electronically controls the fuel injection timing and amount in stages rather than all at once for optimal combustion. The results are great efficiency, better fuel economy and less engine noise. Its combination with the Exhaust Gas Recirculation (EGR) and Diesel Particulate Filter (DPF) Muffler reduces emissions to make the SVL75-2 Tier IV compliant/ SVL90-2 Interim Tier IV compliant.





| | | |
|-------------------------------|-----------------|-----------------|
| | SVL75-2 | SVL90-2 |
| Bucket Breakout Force: | 6204 lbs | 7961 lbs |
| Arm Breakout Force: | 4766 lbs | 6742 lbs |
| Lifting Capacity: | 4881 lbs | 5869 lbs |
| Tipping Load: | 6570 lbs | 8600 lbs |

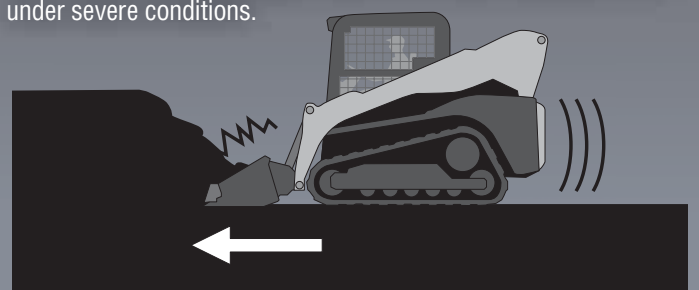
Automatic regeneration system

Kubota's original automatic regeneration system automatically burns accumulated particulate matter (soot) in the DPF muffler to keep the muffler clean for longer operation. For safety reasons, automatic regeneration can be turned off with the inhibit switch when the excavator is operating in areas that are close to material with potential for ignition.



Electronic Travel Torque Management

Electronic Travel Torque Management System lets you work faster with more power. The ECU constantly monitors the load of the machine to optimally control hydraulic pump output according to the load, preventing engine stalls for smoother operation even under severe conditions.





SVL75-2: 60" (1527 mm)
SVL90-2: 62" (1568 mm)

Kubota Unique Vertical Lift Design

High-flow Hydraulics (Option) (SVL90-2)

This option can increase the hydraulic capacity for implements requiring larger hydraulics. Both 1/2" and 3/4" couplers are included.



Long Reach for Maximum Lifting and Dumping High Bucket Hinge Pin Height

Kubota's unique vertical lift is designed to deliver an exceptionally long reach of 41.7 inches (SVL75-2) and 40.7 inches (SVL90-2). In addition, the tip of the arm is optimally shaped for a tall hinge pin height of 119.1 inches (SVL75-2) / 128.6 inches (SVL90-2) for easy dumping into trucks.



Standard Self-leveling Function

This feature helps keep the bucket or fork in a horizontal position without the need to manually adjust the angle during lifting.



Travel Performance

1. Standard Two-speed Travel

Shift from low gear at 4.7 mph (SVL75-2) / 5.0 mph (SVL90-2) to high gear at 7.1 mph (SVL75-2) / 7.3 mph (SVL90-2) to get the job done faster.

2. Pilot Valve with Shuttle Piston

This ensures consistent oil flow which improves stability when going straight.

3. Higher Ground Clearance

A high ground clearance of 11.7 inches (SVL75-2) / 11.8 inches (SVL90-2) lets you travel over large obstacles with ease.

4. Strong Traction Force

Kubota's original track lug design gives you more grip and a stronger traction force of 9678 lbs (SVL75-2) / 12178 lbs (SVL90-2).



EXCEPTIONAL COMFORT

Comfortable Cab

Wider Cab Entrance

A wider entrance makes it easier to get in and out.

Wide And Clean Cab

The spacious interior minimizes fatigue even during long work hours.

High-back Full Suspension Seat

The standard suspension seat offers outstanding comfort. (Air Suspension seat is optional)

Arm Rest

The spacious cab also includes ergonomically placed arm rests on the right and left sides of the seat to minimize operator fatigue.

Wide Leg Room

The cab provides ample leg room to reduce operator fatigue.

Easy-clean Floor Mat and Drain Outlet

The soft rubber floor mat is easy to remove and clean. And with the built-in drain outlet, the mat can be washed in the cab.



Excellent 360° Visibility

The edge of the bucket can be seen from the seat. Improved visibility translates to better safety on the job.



Hand and Foot Throttle

The hand and foot throttle allows you to match the engine speed to the task. The hand throttle is ideal for jobs requiring constant engine speed such as cold planing, trenching or snow blowing. The foot throttle lets the operator vary engine speed for other applications.



EXCEPTIONAL COMFORT

Pressurized Cab

The cab is pressurized to keep dust, flying debris, and insects away to enhance comfort on the job. Furthermore, noise is kept down to let you work for long hours with minimal fatigue.



Excellent Air Conditioning Performance

Optimized Air Conditioning

The climate control system offers outstanding cooling and heating performance with optimized airflow for a high level of comfort all year round.

Enhanced Defrosting and Demisting Functions

Ample airflow prevents the windows from fogging up or freezing during the cold months of the year.



CAB

Easy-open Sliding Windows

The sliding front and double-sliding side windows can be opened regardless of the position of the front attachment, allowing you to get in or out safely even during emergencies.



EASY MAINTENANCE IMPRESSIVE DURABILITY

Easy Maintenance

Tilt-up Cab

The cab can be tilted 72° without having to lift the arm, allowing easy access to the hydraulic pumps, valves, lines and hydraulic tank.

Routine Checks

Simply open the rear bonnet to access all components for daily routine inspections.

Slide-and-tilt Radiator and Oil Cooler

The radiator can be tilted for easy cleaning.



Large Space for Tool Box

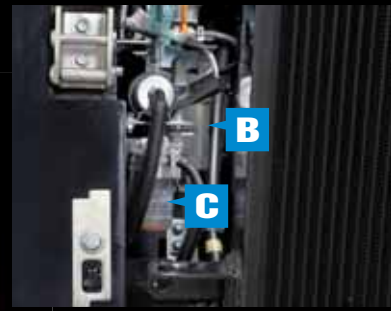
The SVL75-2/90-2 offer a convenient and large tool box for storing a grease gun and other necessities.



ANCE & RABILITY



(SVL90-2)



- A. Dual Element Air Cleaner**
- B. Fuel Filter**
- C. Water Separator**
- D. Maintenance-Free Battery**
- E. Coolant**
- F. Slide-and-tilt Radiator**

Diesel Particulate Filter (DPF)

The Diesel Particulate Filter meets the latest Tier4(SVL75-2) and Interim Tier4(SVL90-2) diesel emissions regulation by collecting particulate matter (PM) from exhaust gas for cleaner exhaust emissions.

Impressive Durability

1. Welded, Integrated Mainframe and Undercarriage

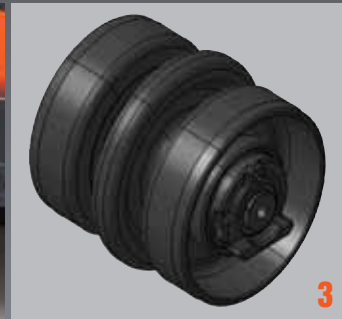
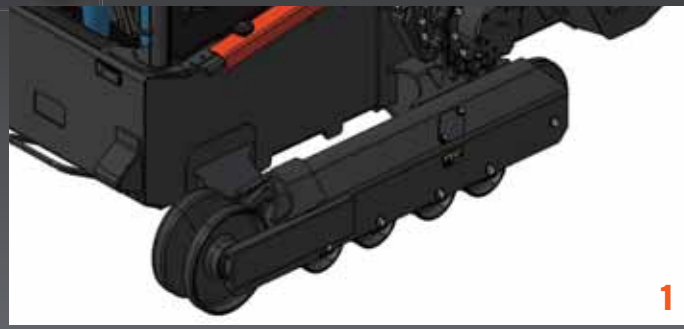
The undercarriage forms an integral part of the main frame for maximum durability.

2. Kubota Original Rubber Tracks

Kubota's original rubber tracks offer outstanding durability and long-life performance. Furthermore, Kubota's original lug pattern prevents soil from accumulating and improves traction force.

3. Triple Flange Lower Track Rollers

A highly reliable triple flange design not only minimizes the risk of detracking, but improves stability as well.



1

2

3

VERSATILITY

With a wide variety of attachments available*, Kubota Compact Track Loaders are the most versatile machine on your jobsite.

**Not all attachments are OEM-KUBOTA.*

4-in-1 Bucket



Auger



Grapple Bucket



Pallet Fork



Sweeper



Brush Cutter

Tiller

Buckets

Tilt Attach

Cold Planer

Snow Blade

Broom

Snow Blower

Dozer Blade

Breaker

Quick Coupler

An optional Hydraulic quick coupler is available. You can attach or remove attachments using a switch without leaving the seat.



EQUIPMENT

STANDARD EQUIPMENT

- Open CAB (ROPS / FOPS Level 1)
- Top / Rear window
- Suspension seat
- 2" Retractable seat belt
- Operator presence control
- Pull down arm rest
- Hand / Foot throttle
- 12V electric outlet
- Horn
- Lockable fuel cap
- Backup alarm

- Working lights (Front 2 / Rear 2)
- Glow plug
- Mechanical quick coupler
- Loader arm float function
- Bucket self-leveling (up only)
- Wet disc parking brakes
- Two-speed travel
- Rubber crawler
- SVL75-2-15.0" (380mm)
- SVL90-2-17.7" (450mm)

OPTIONAL EQUIPMENT

- High-flow aux. hydraulics (SVL90-2) (1/2" and 3/4" couplers included)*
- 14-pin coupler for attachments
- Air ride suspension seat
- 3" Retractable seat belt
- 3-point seat belt
- Rear bonnet lock Kit
- Rear view mirror
- Hydraulic quick coupler*
- Strobe light
- Beacon light

- Spark arrester muffler
- Engine block heater
- Radiator net
- ...and much more.

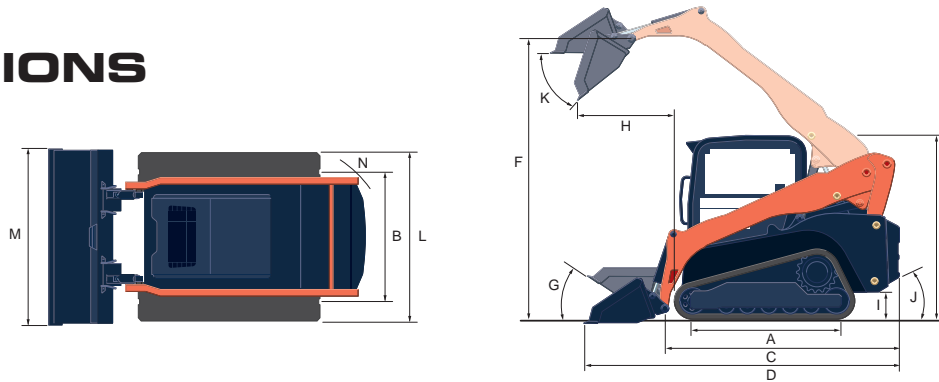
*Factory Option

SPECIFICATIONS

| Model | | SVL75-2 | | SVL90-2 | | | |
|---|---|-----------------------|----------------------------|-----------------------|-----------------------------|--------------|--|
| Type of operator station | | Open CAB / Closed CAB | | Open CAB / Closed CAB | | | |
| Engine | Model | V3307-CR-TE4 | | V3800-CR-TE4 | | | |
| | Gross HP | HP (kW)/rpm | 74.3 (55.4)/2400 | | 92.0 (68.6)/2400 | | |
| | Displacement | cu.in. (cc) | 203.3 (3331) | | 230.0 (3769) | | |
| | Cylinders | | 4 | | 4 | | |
| | Bore × Stroke | in.(mm) | 3.7 (94) × 4.72 (120) | | 3.94 (100) × 4.72 (120) | | |
| Aspiration | | Turbocharged | | Turbocharged | | | |
| Loader Performance | Rated operating capacity-35% tipping load | | lbs. (kg) | 2300 (1043) | | 3010 (1365) | |
| | Rated operating capacity-50% tipping load | | lbs. (kg) | 3285 (1490) | | 4300 (1950) | |
| | Tipping load | | lbs. (kg) | 6570 (2980) | | 8600 (3900) | |
| | Breakout force | Bucket | lbf. (kgf) | 6204 (2814) | | 7961 (3611) | |
| | | Lift arm | lbf. (kgf) | 4766 (2162) | | 6742 (3058) | |
| | Lifting capacity | | lbs. (kg) | 4881 (2214) | | 5869 (2662) | |
| Lift arm path | | | Vertical | | Vertical | | |
| Undercarriage | Track Width | | in. (mm) | 15.0 (380) | | 17.7 (450) | |
| | Ground pressure | | psi | 4.7 / 4.9 | | 4.2 / 4.3 | |
| | Track rollers (per side) | | | 4 | | 5 | |
| | Track ground contact length | | in. (mm) | 56.5 (1436) | | 65.6 (1667) | |
| | Travel speed | Low | mph (km/h) | 4.7 (7.5) | | 5.0 (8.0) | |
| | | High | mph (km/h) | 7.1 (11.5) | | 7.3 (11.7) | |
| | Traction force | | lbf. (kgf) | 9678 (4390) | | 12178 (5524) | |
| Min. ground clearance | | in. (mm) | 11.7 (296) | | 11.8 (299) | | |
| Hydraulic system | Loader hydraulic flow | | gpm (ℓ/min.) | 18.8 (71.2) | | 25.1 (94.9) | |
| | Loader hydraulic pressure | | psi (kgf/cm ²) | 3555 (250) | | 3555 (250) | |
| | Aux. hydraulic flow | Standard | gpm (ℓ/min.) | 18.8 (71.2) | | 25.1 (94.9) | |
| | | High | gpm (ℓ/min.) | N/A | | 36.5 (138.3) | |
| Service refill capacities | Hydraulic system | | gal. (ℓ) | 15.9 (60) | | 18 (68) | |
| | Hydraulic tank | | gal. (ℓ) | 9.2 (35) | | 10.1 (38.1) | |
| | Fuel tank | | gal. (ℓ) | 24.6 (93) | | 29.9 (113) | |
| Operating weight (Includes operator weight 175lbs.) | | lbs. (kg) | 9039 (4100) / 9315 (4225) | | 11023 (5000) / 11299 (5125) | | |

The company reserves the right to change the above specifications without notice. This brochure is for descriptive purposes only. Please contact your local Kubota dealer for warranty information. For your safety, Kubota strongly recommends the use of a Rollover Protective Structure (ROPS) and seat belt in almost all applications.

DIMENSIONS



| Model | | SVL75-2 | | SVL90-2 | | |
|-------|---|----------|--------------|---------|--------------|--|
| A | Length of track on ground | in. (mm) | 56.5 (1436) | | 65.6 (1667) | |
| B | Track gauge | in. (mm) | 53.3 (1355) | | 59.5 (1512) | |
| C | Length w/o bucket | in. (mm) | 109 (2768) | | 117 (2972) | |
| D | Length w/bucket on ground | in. (mm) | 140.8 (3576) | | 148.2 (3764) | |
| E | Height to top of cab | in. (mm) | 82 (2083) | | 83.4 (2118) | |
| F | Bucket hinge pin height at max. lift | in. (mm) | 119.1 (3025) | | 128.6 (3266) | |
| G | Rollback angle at carry position | degree | 27 | | 27 | |
| H | Reach at max. lift and dump | in. (mm) | 41.7 (1060) | | 40.7 (1035) | |
| I | Ground clearance | in. (mm) | 11.7 (296) | | 11.8 (299) | |
| J | Departure angle | degree | 31.5 | | 31 | |
| K | Max. dump angle | degree | 40 | | 43 | |
| L | Vehicle width | in. (mm) | 68.3 (1735) | | 77.2 (1962) | |
| M | Width with bucket | in. (mm) | 72 (1829) | | 80 (2032) | |
| N | Turning radius from center-machine rear | in. (mm) | 107.1 (2720) | | 113.5 (2882) | |



***From our excavators and wheel loaders to our tractor/
loader/backhoes, Kubota offers a wide range of reliable,
high-performance construction equipment to get the job
done right.***



©2013 Kubota Corporation

Kubota[®]

KUBOTA CANADA LTD.

Head Office:
5900 14th Avenue, Markham, Ontario L3S 4K4
TEL: (905) 294-7477 FAX: (905) 294-6651

Visit our web site at: www.kubota.ca

